

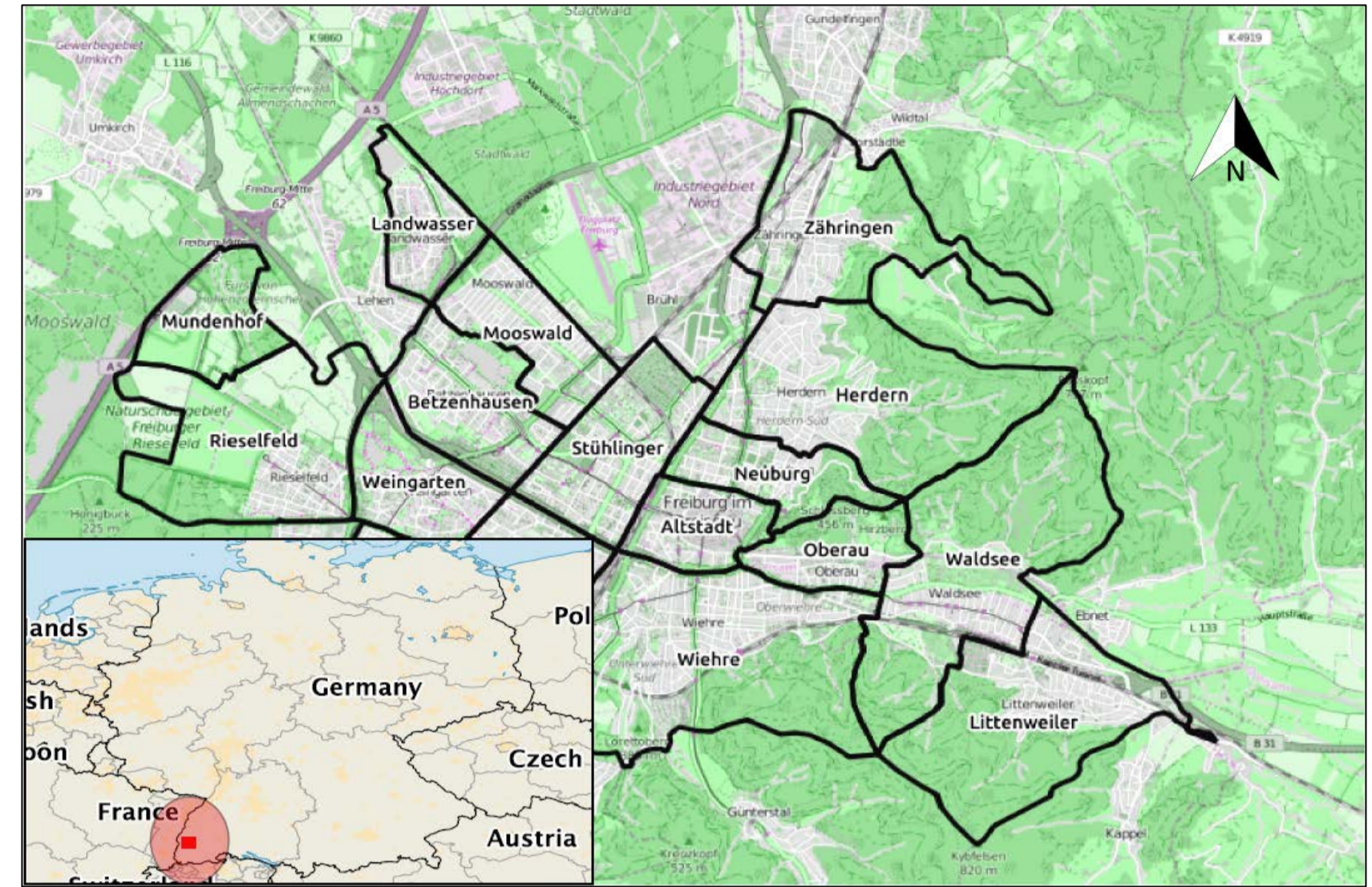
The Impact of the Rosskopf Wind Turbines on the Aesthetic and Physical Environment

Paul Lopatta
Harris Krizmanich

Research Questions

Goal: to determine how the installation of the wind turbines on Rosskopf aesthetically influence the natural landscape in the opinion of Freiburg inhabitants

- What is the subjective impact on landscape from installation?
- Is residency/vicinity to wind turbines negligible?
- What is approval of wind turbines in Freiburg and how has it changed in last ten years?



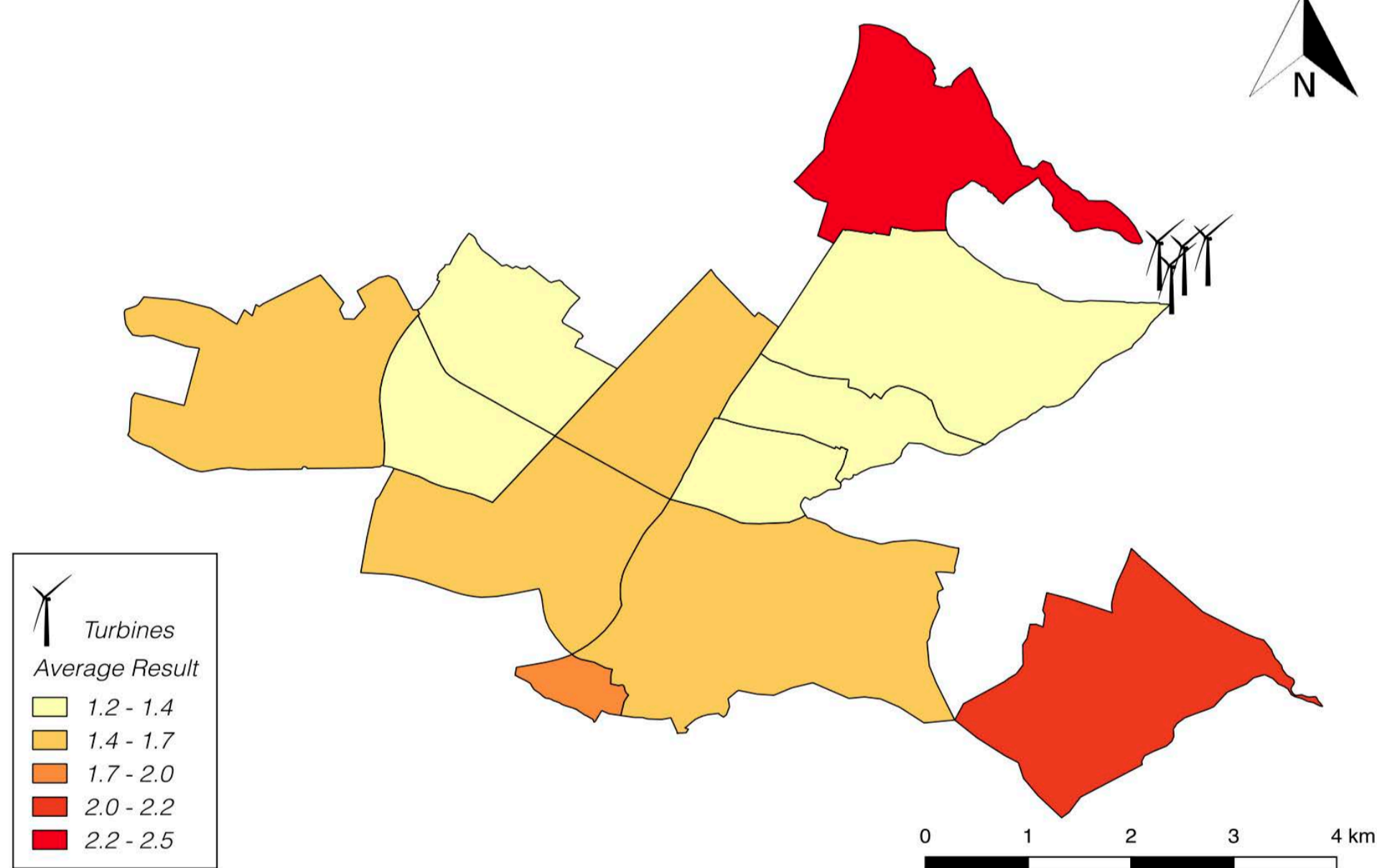
Hypothesis

- Approval of wind turbines will be higher now
- Close vicinity survey participants have lower acceptance
- Relationship between a strong approval and expecting low impact on environment

Methods

1. Creating & Conducting survey
2. Analyzing the data with Excel
3. Creating maps with QGIS
4. Interpreting results and making conclusions

The Effect of the Altered Landscape Depending on District

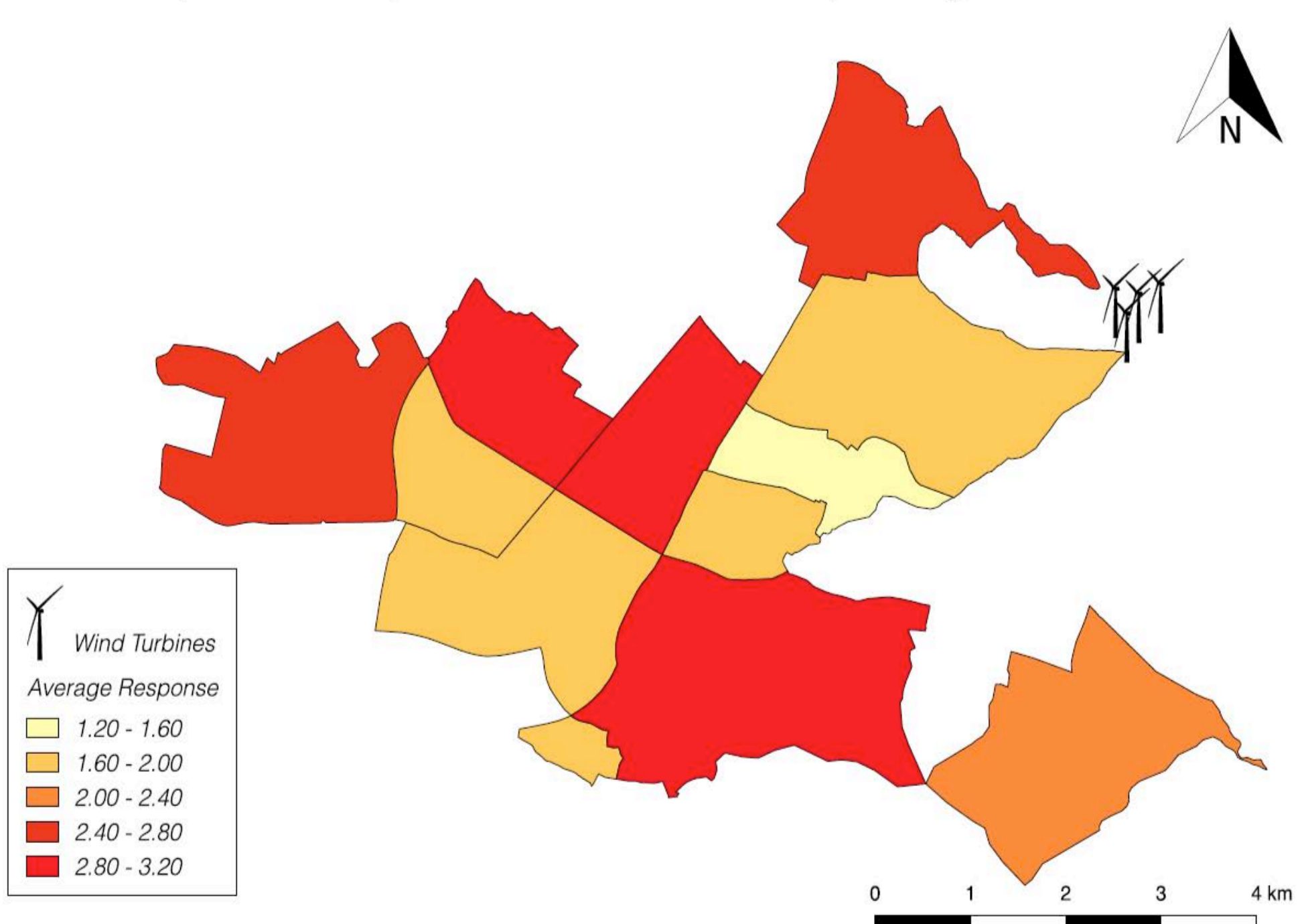


How the wind turbines affect the landscape for interviewees depending on district

Results

- Visual Impact in Zähringen and Littenweiler much higher than mean for Freiburg
- Expected impact of access roads/infrastructure on environment differs from district to district
- General acceptance-rate of wind turbines: 88.4%

The Speculated Impact on the Environment Depending on District



Expected impact of the access roads on the environment depending on the residence of the interviewee

